



StellarMark CIIS 12 / CIIA-Li 12 / CIIS 30V

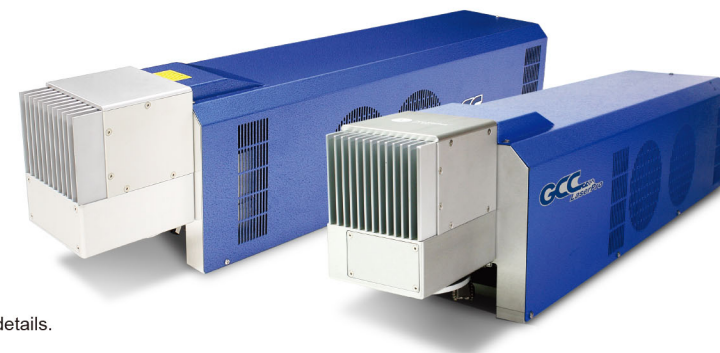
Model No.	CIIS 010	CIIS / CIIA-Li 050	CIIS 070	CIIS 140
Working Area	10 x 10 mm	50 x 50 mm	70 x 70 mm	140 x 140 mm
Spot Size**	0.09 mm	0.12 mm	0.24 mm	0.46 mm
Repeatability**	0.001 mm	0.003 mm	0.004 mm	0.008 mm

StellarMark CIIP 60Ti / 60Ti93

Model No.	CIIP 60Ti / CIIP 60Ti93 070	CIIP 60Ti / CIIP 60Ti93 140	CIIP 60Ti / CIIP 60Ti93 200	CIIP 60Ti / CIIP 60Ti93 300	CIIP 60Ti / CIIP 60Ti93 300 Doublet
Working Area	70 x 70 mm	140 x 140 mm	200 x 200 mm	300 x 300 mm	300 x 300 mm
Spot Size**	0.12 mm	0.24 mm	0.37 mm	0.53 mm	0.48 mm
Repeatability**	0.004 mm	0.008 mm	0.012 mm	0.017 mm	0.017 mm

StellarMark CIIA-HSII

Model No.	CIIA-HSII 140
Working Area	140 x 140 mm
Spot Size**	0.23 mm
Repeatability**	0.008 mm

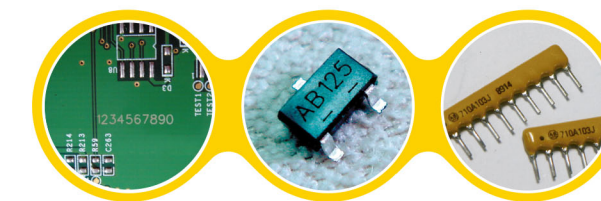


* Speed does not equal to throughput. See dealer or visit www.gccworld.com for more details.
 ** File transmission at USB 2.0 Full Speed rate.
 Specifications are subject to change without prior notice.

StellarMark CIIS 12/CIIS 30V/CIIP 60Ti/CIIP 60Ti93/CIIA-Li/CIIA-HSII 12 Specifications

Model No.		CIIS 12	CIIA-Li 12	CIIA-HSII 12	CIIS 30V	CIIP 60Ti / 60Ti93
Laser Source	Wavelength	10.6 μm				10.6 μm / 9.3 μm
	Type	CO ₂ , sealed-off				
	Output Power	12 W		30 W	60 W	
	Cooling	Air-cooled, no water chiller required				
Electrical Requirements	Power Supply	AC Auto Switching 115V / 230V, 50-60 Hz/ single phase				
	Power Consumption	740 W			1240 W	
Dimensions (L x W x H)	Laser head	831 x 200 x 178 mm	285 x 184 x 560 mm	620 x 200 x 150 mm	831 x 200 x 178 mm	880 x 211 x 202 mm
	Control unit	500 x 420 x 192.4 mm				
Laser Marker Weight		15 kg	17.2 kg	15 kg	17 kg	30 kg
Control Unit Weight		17 kg			19 kg	
Max Linear Marking Speed		3,000 mm/s				
Max Marking Speed		10,000 mm/s				
Operating System		Microsoft Windows 2000 / XP / Vista(32/64 Bit) / 7(32/64 Bit) / 8(32/64 Bit) (Desktop or Laptop PCs)				
Environment	Temperature	15°C ~ 35°C				
	Humidity	10 ~ 80% Non condensing				
Safety		Class 4 (EN60825-1 Class 1 available with safety shield and LFC) 2006/42/EC Machinery Directive 2014/35/EU Low Voltage Directive 2014/30/EU Electromagnetic Compatibility Directive				

* All spec are subject to change without any prior notice.
 ** Material dependent.
 Δ Specifications are subject to change without prior notice.



Optional Items



Adjustable Z-Axis Table Mounting Platform with Light Fire Retardant Safety Shield Rotary Attachment Workstation
 *Not available on StellarMark C-100 model



Authorized Dealer



www.GCCworld.com



GCC Headquarters 4F-1., No.236, Fude 2nd Rd., Xizhi Dist., New Taipei City 22151, Taiwan 886-2-6616-6692 Fax : 886-2-2694-6875
 GCC China No.1, Chen Feng Road, Yushan, Kunshan, Jiangsu 215300, China 86-512-5726-1515 Fax : 86-512-5726-1518
 GCC Europe B.V. Eglantierbaan 43-45, 2908 LV, Capelle a/d IJssel, The Netherlands 31-10-458-9367
 GCC America, Inc 20453 E Valley Blvd. Walnut, CA 91789, USA 1-909-718-0248 Fax : 1-909-718-0251
 US & Canada Only Toll Free: 1-888-284-5211

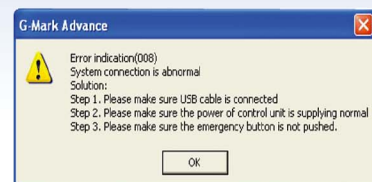
- ▶ CO₂ powered laser available in 12W / 30W / 60W configurations
- ▶ Mark-on-fly marking at constant or variable speed
- ▶ Indispensable G-Mark Basic software supports 1D, 2D, text, logo marking
- ▶ Variable sizes of working area available from 10 x 10 mm to 300 x 300 mm
- ▶ Permanent marking across a wide range of materials: glass, plastics, anodized aluminum, coated metals, and more
- ▶ I/O interface for start, stop, alarm, Emergency Stop, ready, output and input automation control signals

StellarMark is ideal for industrial applications. Not only are the key components sourced from the world's leading suppliers to ensure output quality and stability, it also has the flexibility for manufacturers to handle complex jobs with our new G-Mark Basic software. It constructively offers smart designs of password protection and error detection to prevent operators from making unnecessary mistakes, and detects problems without delay. StellarMark is built to accomplish all your needs and to achieve a higher level of productivity.

Ultimate Software Functions

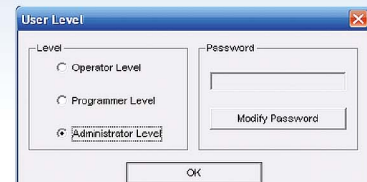
Error Indication

Error messages appear when the laser marker works incorrectly. Operators can be informed by the message and solve the problem immediately.



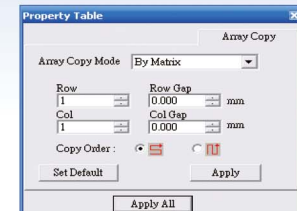
Secure Password

Three-tier password security system (Operator, Programmer, Administrator levels) restricts unauthorized access to the production line.



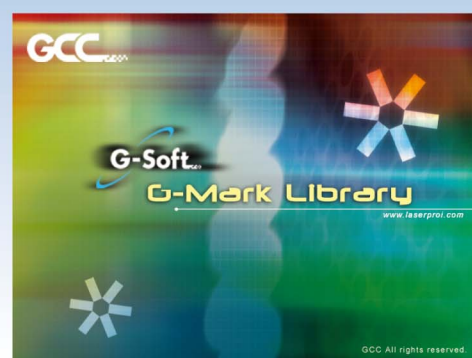
Array copy

Users can create multiple copies of a text or graphic by specifying the number of copies to be replicated and the graphic will be rendered in a matrix format.



G-Mark Library (optional)

This programmable software can be used to customize functions by using VB scripts. All commands are received in real time from a master PC and position offsets, rotating angles and sequential marking can be easily set up.



Superior Text Editing Functions

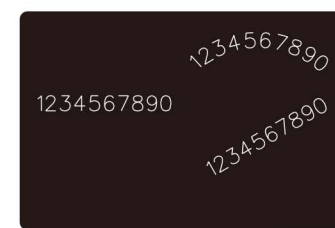
Automatic Serial Marking

With this feature, users can increase or decrease the serial part number automatically.



Font Marking Variations

This feature enables marking of a variety of character expressions via Arc Alignment, Angle Alignment, and Marking Direction.



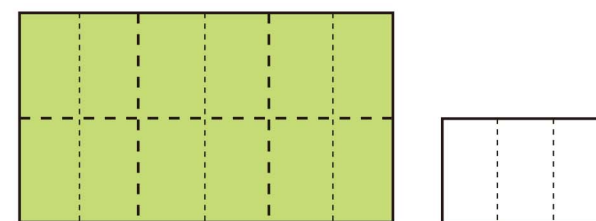
Barcode Marking

14 types of 1D and 5 types of 2D barcodes (Data Matrix, PDF417, QR Code and Maxi Code) are available.



Allow Bigger Working Area for Higher Productivity

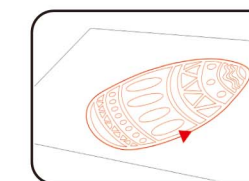
StellarMark HS series will allow user to work at bigger working area than other conventional laser and to achieve more productivity.



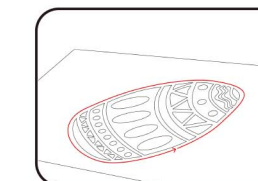
LaserPro working area vs. Others working area

Preview Mode

Variable-speed, red dot pointer "preview" mode outlines the marking path.



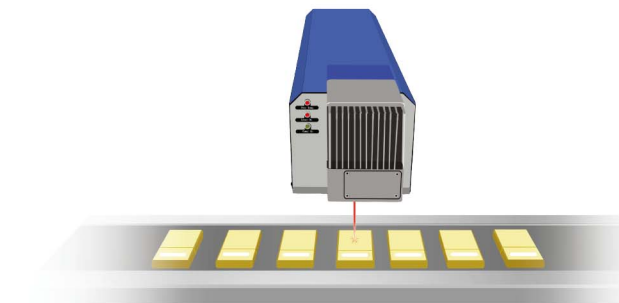
Full Path



Outline Path

Mark on The Fly (Optional)

Non-stop, "on-the-fly" marking of parts maximizes productivity. Precise laser can mark fast-moving parts while the conveyor is at constant or varying speed.



Safety Design and Certification

Emergency Stop



The machine can be entirely shut down by pressing the Emergency Stop button from controller when any emergency occurs.

Key Switch



This safety feature enables operators to keep the laser locked to avoid unauthorized use.

CE Certification



StellarMark complies with the essential safety requirement which set out in the European Directives.

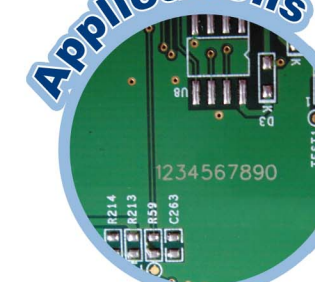
RoHS Compliance



We are committed to make every effort to protect the environment. The StellarMark C-Series is in compliant with the Restriction of Hazardous Substances Directive.

LaserPro StellarMark C series

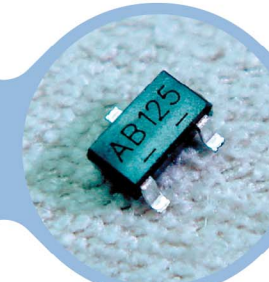
Applications



PCB



Capacitors



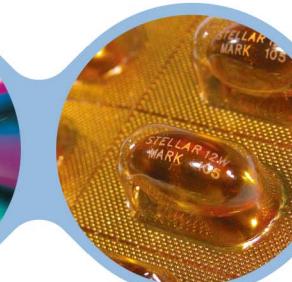
Passive IC



Carton Boxes



Recordable Media



Pharmaceutical Packaging